

INSPIRING GENEROSITY



William J. Yung III and his family celebrate the opening of the new Heart & Vascular Institute building that bears his mother's name. Learn how his generous gift is allowing St. Elizabeth to treat even more in our community with complex cardiac needs.

THE MISSION OF ST. ELIZABETH FOUNDATION

... is to inspire and connect our generous community with St. Elizabeth programs and projects dedicated to improving the health of our families, friends and neighbors. We will elevate St. Elizabeth to lead the communities we serve in becoming the healthiest in America.

There are few sentiments in life more powerful than gratitude. The overwhelming feeling experienced after being the fortunate beneficiary of any sort of gift. At St. Elizabeth Foundation, we have many reasons to be grateful. In fact, we have more than 100 million of them. We are delighted to have surpassed the milestone of **\$100 million raised in our relatively short 30 years of our existence.** We're energized by the faith, confidence and support shown by our community. And we're excited to see where generosity takes us next. We are sincerely grateful and, truly, appreciate your partnership.



Carri Chandler

Vice President,
St. Elizabeth
Foundation

Since its founding in 1992, St. Elizabeth Foundation has inspired and connected our generous community with St. Elizabeth programs and services dedicated to improving the health of our families, friends and neighbors. Together, we have built centers of excellence that stand as beacons of hope, provide comfort and care for those who need it most and transform the future of healthcare for our community.

Today, we are humbled, grateful and excited to announce, because of your extraordinary efforts, and of those who have come before, St. Elizabeth Foundation has raised more than \$100 million for our community over the last 30 years. We are humbled by the fact that \$10 million of this amount was given by dedicated associates of our St. Elizabeth family.

I could not be more proud of this region we call home or more grateful for those around us who we're fortunate to call neighbors.

Indeed, generosity does begin right here at home.



Bob Hoffer

Chair, St. Elizabeth Foundation
Managing Partner, DBL Law

ST. ELIZABETH PAVING THE WAY FOR INNOVATIVE CANCER CARE IN DEARBORN COUNTY



Future home of St. Elizabeth Dearborn Hospital and Cancer Center in Greendale, Ind.

St. Elizabeth Healthcare is bringing a new level of options to residents of Southeastern Indiana and Western Cincinnati with the construction of a cancer center in Dearborn County. The St. Elizabeth Dearborn Cancer Center will be located in Greendale, Indiana and will provide early breast cancer detection screenings, easy access to high-quality care close to home and specialized treatment options.

These innovative and localized cancer care services will save patients from long-distance drives to seek the life-saving cancer screenings and treatments previously not provided in the

region. The Dearborn Cancer Center will also be the first to bring radiation treatments to patients in these communities, along with cutting-edge clinical trials.

Construction of the Dearborn Cancer Center is expected to get underway soon and will cost an estimated \$30 million. Donors looking to support this project can make contributions to the Dearborn Cancer Center Fund through the St. Elizabeth Foundation by contacting Sarah Siegrist, Director of Development and Foundation Operations, at (859) 301-6347 or sarah.siegrist@stelizabeth.com.

YUNG FAMILY GENEROUSLY TRIBUTES FLORENCE WORMALD WITH LARGEST GIFT IN ST. ELIZABETH HISTORY



Ribbon cutting celebration for the naming of the Florence Wormald Heart & Vascular Institute at St. Elizabeth in Edgewood.

\$7 Million Investment Supports Heart & Vascular Institute

A generous gift from Edgewood resident William J. Yung III, president and founder of Crestview Hills-based Columbia Sussex Corporation, is enabling St. Elizabeth to treat even more patients with complex cardiac needs through the new Florence Wormald Heart & Vascular Institute at St. Elizabeth. The \$7 million donation—the largest in St. Elizabeth history—supports the facility to increase access to quality cardiac care, acquire state-of-the-art equipment and physician recruitment. The new building on the campus of St. Elizabeth Edgewood was named in honor

and memory of Yung’s mother, whose courage, independence and pioneering spirit inspired his own entrepreneurial success.

“My mother was a woman ahead of her time who dared to dream beyond societal norms and expectations, and succeeded in doing so,” said Yung. “The example she set and the values she instilled in me have been keys to my own success, which is why I’m honored to support the St. Elizabeth Heart & Vascular Institute with a gift in her name. My hope is that this donation will help attract even more top physicians and



researchers while enhancing access to elite cardiovascular care, right here in the community we call home.”

Since its opening in 2015, the Heart & Vascular Institute has made tremendous progress toward its foundational goal of decreasing heart-related deaths in Northern Kentucky by 25 percent by 2025—and the new Edgewood facility is a momentous step in that direction. During the last six years, St. Elizabeth has added numerous cardiac specialists and adopted leading-edge technology, including wireless pacemakers small enough to fit inside the heart, implantable heart pumps that extend life for patients with heart failure and heart valves that can be replaced without open heart surgery.

“At St. Elizabeth, our number one priority is our patients. With the opening of the new facility, we are uniquely positioned to offer exceptional cardiac care and patient experience in one central location: close to home,” shared D.P. Suresh, MD, Cardiologist and Executive Medical Director of the St. Elizabeth Heart & Vascular Institute.

Yung and his family joined St. Elizabeth as we celebrated the opening of the 67,000-square-foot Heart & Vascular Institute building which bears his mother’s name. The facility brings more than 30 multi-specialty physicians and 30 advanced practice providers under one roof,

FLORENCE WORMALD: A WOMAN AHEAD OF HER TIME



Florence Mendell Yung Wormald was born in 1908 and spent her childhood in the Northern Kentucky river cities of Dayton and Bellevue. Divorced at

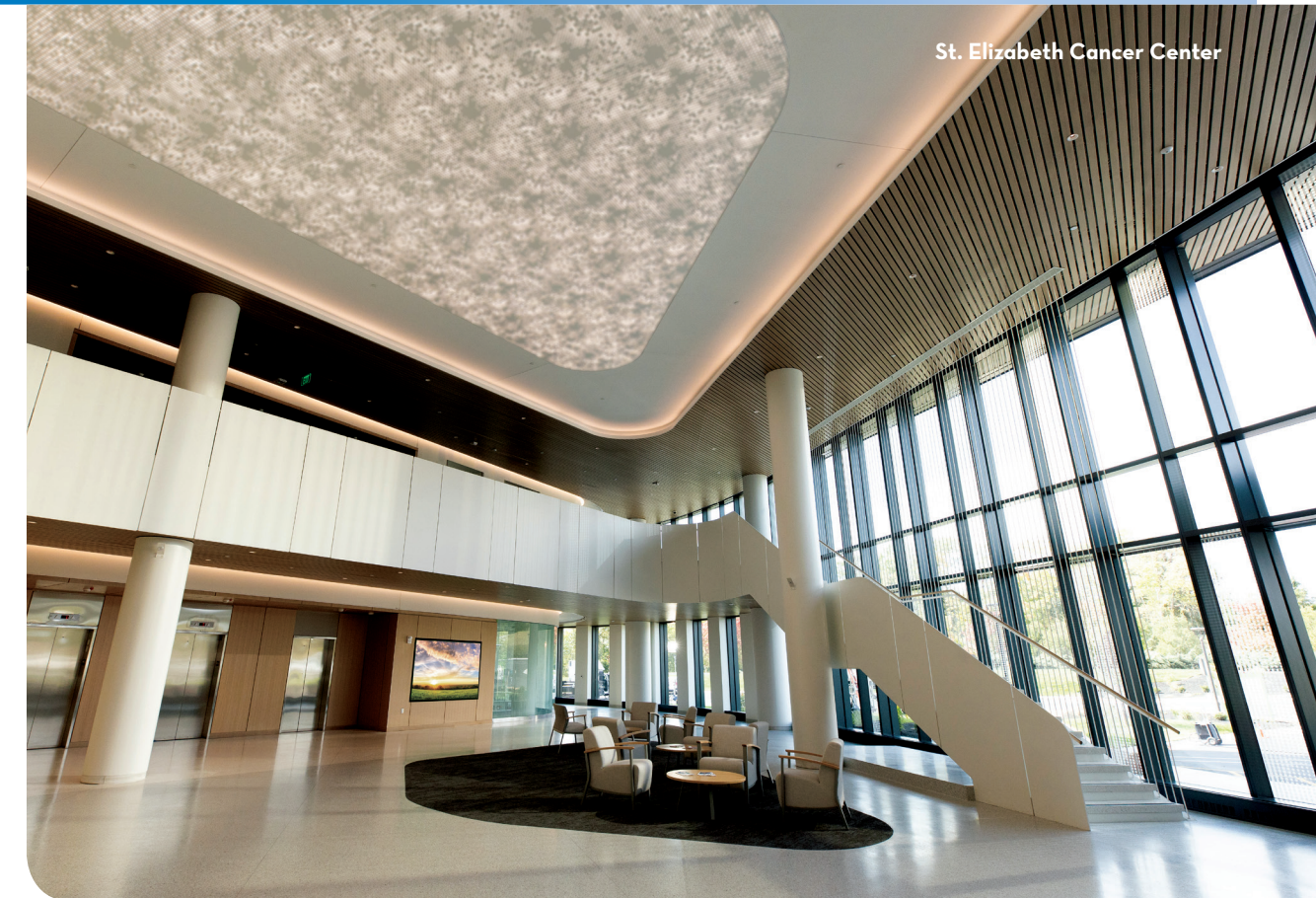
age 32 and determined to give her infant son the best start in life, she began buying, renovating and selling houses for extra income, while keeping the security of her full-time job—something quite remarkable for a single mother in the 1940s. Eventually she became her own boss, establishing a development company and building homes and apartment buildings throughout Northern Kentucky.

Florence’s courage, independence and pioneering spirit inspired the entrepreneurial success of her son, William J. Yung III, president and founder of Columbia Sussex Corporation, whose generous support in her honor advances the programs and services of the Florence Wormald Heart & Vascular Institute at St. Elizabeth.

improving coordination of care and allowing St. Elizabeth to expand the reach of advanced heart care in the region. Services at the new location include cardiology, cardiac electrophysiology, cardiac surgery, cardiac rehabilitation, an outpatient cath lab, the Advanced Heart Failure Management Center, the Structural Heart & Valve Center, diagnostic services, cardiovascular genetics, cardiac clinical trials and an on-site lab.

For more information on the Florence Wormald Heart & Vascular Institute at St. Elizabeth and our commitment to comprehensive cardiac care, visit stelizabeth.com/heart.

DONORS MAKE AN IMPACT RIGHT HERE, RIGHT NOW MARKING NEW MILESTONE IN GIVING



St. Elizabeth Cancer Center

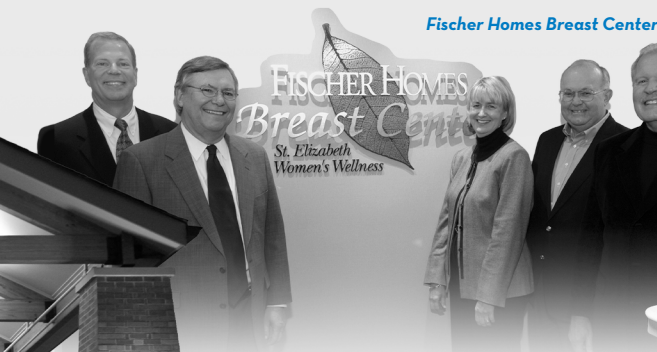
The generosity of the community, dedicated donors and St. Elizabeth associates is making an immediate impact to improve the health and quality of life for our friends, neighbors and loved ones in our region. With your help, St. Elizabeth Foundation has reached a new milestone in generosity with more than \$100 million in donations.

Your generosity and commitment to elevating and improving patient care in the last 30 years allowed St. Elizabeth to expand beyond Northern Kentucky and now provide first-class healthcare to surrounding regions, including Southeastern Indiana. We are so grateful to each donor whose support improves healthcare in the region, not just for this generation, but the next, to deliver the Right Care, Right Here at home.

ST. ELIZABETH FOUNDATION THROUGH THE YEARS



Esther Marie Hatton
Cancer Care Center
& Groundbreaking



Fischer Homes Breast Center

The Carol Ann & Ralph V. Haile Jr.
US Bank Foundation Hospice Center



Cardiovascular Outreach Van



da Vinci
Surgical
System



St. Elizabeth
Healthcare
150th Anniversary



Samaritan Society
Annual Dinner



St. Elizabeth
Cancer Center
Grand Opening



Florence Wormald Heart &
Vascular Institute

1990

2000

2010

2020

2021

2022

1990-1991: St. Elizabeth Foundation forms with six committees; Merwin Grayson, Jr. named first Chair of Foundation. Mr. Grayson serves as Foundation chair until 2000.

1990: Vision Campaign, an associate-driven campaign, launches to support growing health needs of the community and unexpected needs of colleagues; \$100,000 raised.

1992: Samaritan Society forms, consisting of donors who pledge a minimum of \$10,000 to St. Elizabeth Healthcare over 10 years.

1992: Foundation launches first major hospital fundraising initiative, raising \$2.4 million for the Ambulatory Care Building project.

1993: Louis R. Putnam Scholarship created for employees of St. Elizabeth.

1996: Samaritan Society reaches \$1 million milestone; Vision Campaign marks \$500,000 milestone.

1999: Groundbreaking of *Esther Marie Hatton Cancer Care Center* at St. Elizabeth Edgewood.

1997: \$1.5 million gift from Dr. E. Kenneth Hatton, in memory of his wife for the Esther Marie Hatton Cancer Center, largest gift to date.

2007: Grand Opening of *The Carol Ann & Ralph V. Haile Jr./US Bank Foundation Hospice Center*; \$6 million raised.

2005: *Fischer Homes Breast Center* opens.

2009: DBL Law pledges \$620,000 toward first *da Vinci Surgical System* for St. Elizabeth.

2009: \$10,500 raised during the first year for oncology chairs at the Grant County facility.

2008: *Cardiovascular Outreach Van* generously funded by Employee Vision Campaign and Trust Financial Corporation, (formerly Bank of Kentucky).

2010

2010: Fifth Third Bank donation assists in purchase of second *da Vinci Surgical System* for St. Elizabeth with major donation.

2010: Dr. John Holmes donates \$300,000 to kick off Heart & Vascular Campaign.

2011: St. Elizabeth Healthcare celebrates 150th Anniversary; Gala raises more than \$150,000.

2013: Bill Butler donates \$1 million to Heart & Vascular Institute.

2014: Young Patron's Guild forms to raise \$20,000 annually.

2015: Heart & Vascular Institute opens with \$15 million raised and My Heart Rocks program created.

2018: Groundbreaking of *St. Elizabeth Cancer Center*.

2019: dōTERRA donates \$5 million gift for Center for Integrative Oncology.

2020

2020: Cancer Center Grand Opening; \$35 million in gifts and pledges. Community Campaign launched with matching gifts up to \$1,000,000 from Central Bank.

2020: COVID Relief Fund established for associates and patients in need.

2020: Transitioned Highpoint Health Foundation into St. Elizabeth Foundation.

2020: Vision Campaign supporting Vaping Education & Scholarships marks new milestone raising \$2.1 million and 80% participation by St. Elizabeth associates.

2021

2022: Launched "Healers Among Us" program to give patients and community members an opportunity to show their appreciation and gratitude to St. Elizabeth healthcare providers and associates.

2021: \$7 million donation from *William J. Yung III for the Heart & Vascular Institute*, the largest to date. The Center named after Yung's mother and is now called the *Florence Wormald Heart & Vascular Institute*.

2021: Golf Classic and Golf ParTee raises record \$350,000.

St. Elizabeth Foundation has given clinicians the ability to deliver patient care close to home through mobile health units that provide lifesaving, early-detection screenings for heart disease and cancer. Each year, the CardioVascular Mobile Health Unit and the Mobile Mammography Unit screen more than 10,000 patients throughout the communities we serve.

As donations increased over the last three decades, the St. Elizabeth Foundation raised critical funding for clinical research that brought new treatment options, new hope and

SINCE 1990, COUNTLESS LIVES HAVE BEEN TOUCHED BY YOUR GENEROUS DONATIONS.

the possibility of finding a cure for diseases that were previously thought to be incurable. Our donors and volunteers save lives, advance technology and

serve as beacons of hope to the community. The transformative outcomes of clinical research and advances in treatment are most visible at the St. Elizabeth Cancer Center and the Florence Wormald Heart & Vascular Institute, but also seen in daily practices, treatments and care we provide to patients and families throughout their journey.

In 2007, the Carol Ann & Ralph V. Haile, Jr./ U.S. Bank Foundation Hospice Center was built in Edgewood, providing a tranquil environment of dignity and compassion during end-of-life care. The transitional care of hospice provides compassionate medical care which honors life, love and togetherness.

Since 1990, countless lives have been touched by your generous donations.

Together, we are leading the communities we serve in becoming the healthiest communities in America.

ST. ELIZABETH FOUNDATION CHAIRS



Mer Grayson, Jr
1990–2000



John Domaschko
2001–2006



Paul Sartori
2007–2012



Dick Tapke
2013–2015



Bob Hoffer
2016–Present

VOLUNTEER SPOTLIGHT: HOSPICE COMMITTEE

St. Elizabeth Foundation’s vital work is in large part carried out by committed volunteers who share their expertise and resources by serving on our various committees. Each committee works toward fulfilling the Foundation’s mission by pursuing different ways to support the essential projects undertaken by St. Elizabeth Healthcare.

The St. Elizabeth Foundation Hospice Committee is a group of heartfelt individuals united by a common passion—advancing the services of our Hospice program to enhance the patient and family experience. For many of them, it’s personal. Whether they went through Hospice with a loved one, benefitted from bereavement counseling at the Grief Center or have given their time in service to hospice patients and families. Each committee member is inspired to engage, educate and raise awareness in our community about St. Elizabeth Hospice.

Read on to learn how their support of St. Elizabeth Hospice and its continuum of services is benefitting patients and families alike.

Are you grieving the loss of a loved one?

The Mary & Jim Bunning Community Grief Support Center provides individual, family and group grief counseling. These classes help identify feelings and focus on concerns associated with grief. We serve the entire Northern Kentucky region, and our services are free and open to all, regardless of whether or not your loved one was cared for by St. Elizabeth Hospice. Contact us at (859) 301-4611 or stars@stelizabeth.com to learn more.

The only cure
FOR GRIEF
IS TO GRIEVE.

— Dr. Earl A. Grollman,
Living When a Loved One Has Died

ST. ELIZABETH FOUNDATION HOSPICE COMMITTEE

Kathy Collins	Dennis McEvoy
Chris Grubbs	Vickie Mertz
Maureen Hebert	Steve Roeding
Peggy Holliday	Judy Schneider
Emily Lusk	



Hospice Committee

HELPING CHILDREN THROUGH GRIEF

When a child experiences the death of a loved one, the emotional trauma can be devastating. However, their grief is not always immediately recognized. Adults may assume the child is too young to really understand what’s going on. Or they may try to shelter the child from the pain of the experience by not talking about it. Many times, the adults in a child’s life are also experiencing loss and simply don’t know how to best support them, when they themselves are in need of support.

When Cara Brooks’ 12-year-old stepdaughter lost her mother in May of 2018, Cara was quick to look for help. One of her best childhood friends had lost a parent when Cara was young, and she remembered how beneficial the grief counseling experience had been for her friend and her siblings.

“I started doing some research and learned that St. Elizabeth had a children’s program,” said Brooks. “This was May, and STARS for Kids was just wrapping up for the year, but we started with them that August and ended up going for the next two years.”

Cara’s stepdaughter also attended the STARS Equine Adventure therapy camp, where she was able to explore her grief with peers in a natural setting and shift the focus off herself by tending to horses and other farm animals.

“It was great for her to be around kids her own age,” said Brooks. “Before STARS, I don’t think she felt anyone really understood what she was going through personally.”

“Honestly, it was a benefit for the entire family,” added Brooks. “I was able to connect with other parents of grieving children; her grandmother

was able to speak with other parents who had lost a child. It really is all-encompassing, meeting and helping anyone wherever they’re at in the grieving process.”

“Most importantly, it gave our daughter a different perspective and allowed her to grieve in a very positive way around kids going through the same thing. And for that, we’re truly grateful.”

Cara Brooks is the community relations manager for Duke Energy and serves as a volunteer member of the St. Elizabeth Foundation Business Services Committee.



Cara's stepdaughter at the STARS Equine Adventure Camp for Kids in Verona, Ky

STARS for Kids is a support group for any school-age child (and their caregiver) who has experienced the death of a loved one. Meetings are held at various times during the year. If you’re interested, please contact Marcella Cameron Meyer at (859) 301-4612 or marcella.cameronmeyer@stelizabeth.com.

STARS Equine Adventure Camp is a free program for kids ages 8–18 who are grieving the loss of a loved one. Held at the New Day Ranch in Verona, Ky., it offers interaction with horses, fishing, hiking, archery and games to promote healing and emotional wellness. For more information, contact Marcella Cameron Meyer at (859) 301-4612 or marcella.cameronmeyer@stelizabeth.com.

GIVING BACK: IN MEMORY OF LOUIE CHEESMAN

In January 2018, Keith Cheesman's father, Louie, was diagnosed with myelodysplastic syndrome, a cancer in which the bone marrow stops producing enough healthy blood cells. Louie's oncologist, Dr. John Winkelmann, explained that the only potentially curative therapy would be a bone marrow transplant. But for an 84-year-old, such a treatment could be just as harmful, if not more so, than the disease itself. So instead, they focused on managing Louie's symptoms with regular blood transfusions.

"Initially, the transfusions were every three to four weeks," recalled Keith, "But as time progressed, they got much more regular. By June, he was visiting St. Elizabeth daily." That's when Louie's veins stopped cooperating. He could no longer be supported by transfusions.

Louie and his family met with Dr. Winkelmann and made the decision to start hospice care. The night before he was to be admitted, however, Louie got very ill. "Here we were, 12 hours out from hospice admission," said Keith. "We didn't know what to do. I spoke with the physician on call at the Cancer Center, and he said to call the paramedics and tell them we needed a comfort run to the hospital."



Keith & Mary Pat Cheesman

At the emergency department, Keith looked to the attending physician for additional guidance. He quickly connected Keith with St. Elizabeth Hospice, who sent over a representative. "It was 2 a.m., and they said, 'We'll get him into the program tonight,'" explained Keith. "Next thing I know, we've signed the paperwork, they're delivering oxygen to my parents' home, and we're getting discharged. Everyone involved was truly spectacular in getting dad the care and comfort he needed."



Mary & Louie Cheesman

The following morning, St. Elizabeth Hospice transported Louie to its Edgewood inpatient facility for a respite stay. "It was only going to be a three-day stay, unless his condition declined precipitously," said Keith. However, Louie's condition did worsen, and just three days later, he passed away. "During that whole six months, everyone we worked with, from the Cancer Center to Hospice, was fantastic. And not only to Dad, but to my mother, my siblings and me. The hospice nurses in particular were remarkable in tending to everyone's care."

So touched were Keith and his wife, Mary Pat, by the care and attention given to Louie and their family that they wanted to show their appreciation with a gift of gratitude. In memory of Louie and in honor of the associates who cared for him, they donated \$10,000 to benefit St. Elizabeth Cancer Center and St. Elizabeth Hospice. And today their gift is bringing hope, healing and comfort to their neighbors who need it most.

HERITAGE BANK DONATES \$500K FOR HEART & VASCULAR INSTITUTE

Heritage Bank has donated \$500,000 to St. Elizabeth Healthcare to further enhance heart and vascular services in Northern Kentucky. The gift includes naming rights to the main lobby area of the new Florence Wormald Heart & Vascular Institute at St. Elizabeth, where comprehensive, centralized services have increased convenience for patients and improved coordination of advanced heart care in the region.



"At St. Elizabeth, we are driven to bring the highest level of cardiac care to the region," said D.P. Suresh, MD, Cardiologist and Executive Medical Director of the St. Elizabeth Heart & Vascular Institute. "We deeply appreciate this generous investment from Heritage Bank and are grateful they share our passion to deliver personalized care and improve patient outcomes. With this gift, Heritage Bank will help make a lasting impact on the health of Kentucky residents and beyond for generations to come."



IN APPRECIATION OF MARY LYNN BRUNEMANN

We wish to honor Mary Lynn Brunemann, Assistant Vice President, for her loyal and dedicated service as she retires from St. Elizabeth Foundation.

Mary Lynn has been at the heart of St. Elizabeth Foundation since she joined the team in 2015. She has been instrumental in leading the charge as we raised support for the Heart & Vascular Institute, the Cancer Center, Hospice, mobile health units, clinical research, the recently launched Healers Among Us grateful patient program and countless other vital initiatives which are now woven into the fabric of our community.

Her work with the Foundation has been the grand finale of a long and productive career dedicated to the health and wellness of our entire region, from her beginnings as a staff nurse at The Christ Hospital through her hiring at St. Elizabeth as a Sales and Marketing Representative in Business Health Services in 2001. A fixture in, and ardent supporter of, our Northern Kentucky community, Mary Lynn has held countless volunteer roles devoted to the advancement of the region and continues to lend her strong support.

We sincerely thank Mary Lynn for her good and faithful service. Her vision and dedication have made a real, lasting difference.



1 Medical Village Drive | Edgewood, KY 41017

Non Profit
U.S. Postage
PAID
Cincinnati, OH
Permit No. 9867

SAVE THE DATE!

*We are excited to once again be able to safely gather.
Mark your calendars for the following St. Elizabeth Foundation events:*

GOLF PARTEE

Tuesday, September 13

Host Courses: Summit Hills,
Highland, Triple Crown, Twin Oaks

SAMARITAN CELEBRATION

Saturday, October 22

North at Hotel Covington

HOLIDAY STYLE SHOW & LUNCHEON

Monday, November 21

Ovation, Newport

TOGETHER, WE'LL MAKE A LASTING IMPACT — RIGHT HERE AT HOME.

Contact Us. Connect with us to learn more about how you can make a difference in our community!

(859) 301-3920 | stefoundation@stelizabeth.com | stelizabeth.com/foundation

Please contact us if you wish to opt out of receiving any direct mail, email and/or telephone solicitations from St. Elizabeth Foundation.